



# HeathWatch

[www.surreyheathnw.co.uk](http://www.surreyheathnw.co.uk)

The quarterly Neighbourhood Watch newsletter for Surrey Heath  
Volume 2 Issue 67 Autumn 2019 Editor Juanita West  
Printed by YesPrint Ltd. 01252 878120 [www.YesPrint.co.uk](http://www.YesPrint.co.uk)



## Message from the Chairman

I hope you have enjoyed the summer this year even though we had a mix of hot and wet spells and as I write we are again experiencing another few very hot days. Who knows what to expect next in this country!

You may have noticed the array of Selecta-DNA warning signs prominently displayed on lampposts provided by Police to deter would-be offenders both entering and within the borough. This follows on from the free issue of the marking kits provided by police funded by the Police and Crime Commissioners budget earlier this year. The kits are still available at a discount price for you to be able to mark your property to enable it to be recovered and returned to you if it is proceeds of a crime.

The Area Coordinators have been busy throughout the summer arranging the set up of new watches, the induction of new coordinators for the new watches and new coordinators for existing watches. Reg our sign man has also been busy with the new watch signage and refurbishing some

older style ones needing a makeover. We are aware of some of the new properties being built and our aim is to introduce the residents to Neighbourhood Watch. If you know of new developments or have a new neighbour perhaps this may be a way of introducing yourself and certainly notifying your coordinator.

The Surrey Heath Community Lottery has been successfully launched, with Neighbourhood Watch now receiving a small donation from our supporters who have pledged their 50% of ticket to us. We would like to have more supporters who could also pick up a prize maybe £25000: we have already seen that a few lucky participants who have chosen to support us have been fortunate to win a prize.

Since the resignation of the police communications volunteer we have not seen weekly reports of local crime but we must give credit to our Borough Commander who has asked us to publish on our Facebook pages any important warnings which affect the well being of residents and notify police of any concerns relating to your safeguarding.

*Martin Butcher*

## Surrey Heath Borough Commander

I'd like to start this piece with some news of staff moves from the Surrey Heath neighbourhood team. In my last article I mentioned that PC Anna Whiteside had moved on to pastures new; she has been replaced by PC Paul Finnegan who was previously a PCSO and PC with Thames Valley Police before transferring to Surrey. He has an extensive neighbourhood Policing background and has already had some notable success dealing with some of our more difficult customers. I would also like to welcome PCSO Callum West who joins the team having finished his training. PCSO Jamie Charlton has left the team to work for the UK border agency and we wish him well in his new career.

You will have noticed that our communications of late on "In the Know" have dropped off. I am in the process of recruiting a new volunteer to fulfil that role and hope to have Rob Freeman in place by the time of the next edition of Heathwatch. I would like to thank David Howie for all his work in the role.

You will have no doubt seen in the national press the tragic death of our colleague from Thames Valley Police, PC Andrew Harper. Sadly the amounts of assaults on Police officers in my own team included seems to be increasing. Only last week two local men were found guilty of assaulting two officers from my team last December. Rest assured, we do our best to protect you and your families and will continue to do so; I sincerely hope that this trend reduces over the coming months. Our thoughts are with PC Harper's wife and family.

The amount of crime affecting Surrey Heath has remained static compared to this time last year and we have the lowest recorded figures of the four boroughs on the Western division (Woking, Waverley, Guildford and Surrey Heath). With your help, I hope we can keep it that way, keep 'em peeled and if it looks suspicious then call it in, either on 101 or online. 999 in an emergency.

*Bob Darkens*

This newsletter is produced by the Neighbourhood Watch Support Group with funding gratefully received from Surrey County Council. We are thankful for the regular help we receive from Safer Surrey Heath Partnership and from Surrey Police in the promotion of Neighbourhood Watch and the distribution of HeathWatch. We gratefully acknowledge the generosity of Windlesham Parish Council in supporting us.

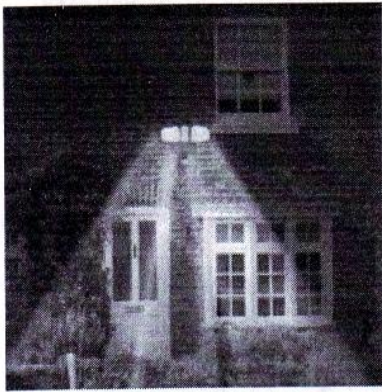




## Surrey Police Crime Reduction Advice

'The nights are drawing in' and despite the temperature being in the 30's so recently, we need to think about how this affects our security.

### Lights



Check your outside lights, give them a good clean and renew the bulbs if need be. As I said this last year, consider updating your external lights, especially the ones at the front of your house. Install one that has a dusk till dawn sensor, it comes on as it gets dark, so no need to re-

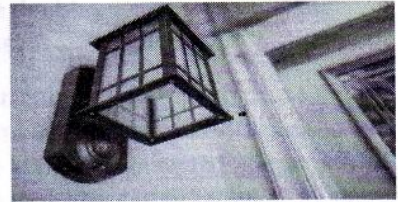
member to turn it on, or change the timer. Look for one that has a 'Hi- Low' facility, so it increases in brightness with movement. The solar lights continue to improve in quality and a movement sensor one will be a good back up, but not a replacement for a wired in light.

### CCTV

Many of us now have CCTV systems, either professionally installed, DIY or the doorbell type. But CCTV brings with it the responsibility to comply with the relevant legislation. I hope we are all aware of this, but here is a link to the Information Commissioner's Office website, who have condensed the rules into a very readable few pages. I advise anyone with CCTV or who is thinking of installing it, to read this.

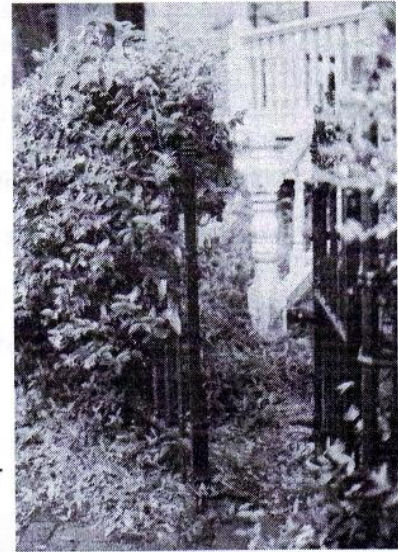
<https://ico.org.uk/your-data-matters/domestic-cctv-systems-guidance-for-people-using-cctv/>

Our advice is always to prioritise good secure doors, windows and an alarm, before thinking of CCTV.



### Foliage

And finally, it has been a wonderful year for growing stuff, with all this sun and rain (so I am told, as I am no gardener, much to my wife's annoyance). This means that the shrubs in our front gardens will have grown up and may provide places to hide for criminals attacking our front doors and windows or getting over our locked side gates. Make sure it all has one last cut back before



winter, to ensure anyone acting suspiciously can be seen. (Ideally tree canopies should be no lower than 2 metres and shrubs no taller than 1.2 metres)

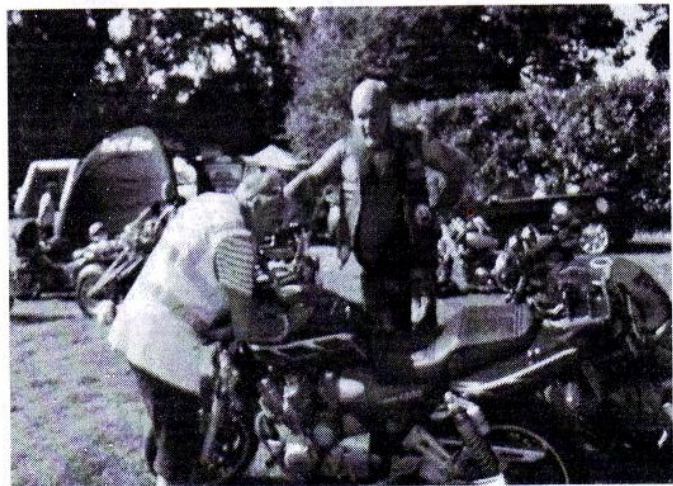
Do give us a call on 01483 639508 if you would like any specific advice, **but ring 101 to report any incident** (always ring 999 in an emergency)

**Mike Jones and Stephen Cake:** Surrey Police Designing Out Crime Officers for, Surrey Heath, Waverley, Guildford and Woking.

## Crime Prevention Trailer

Please visit our team, led by Mike Davis, who does so much good work with the trailer at various public events in our towns and villages. The trailer is popular and can be booked to attend local community events such as fun days and fetes - a volunteer service which we do not charge for.

The most popular function is the security marking of bicycles and baby buggies which is done free of charge. In addition it is possible to purchase UV pens for marking property in the home and small UV torches on a key ring to read the markings. There are also personal attack alarms and cycle security locks for sale all with savings we've obtained through the power of Neighbourhood Watch. **The trailer can be booked by contacting Mike Davis on 01276 63846 or mdavis@surreyheathnw.co.uk.**



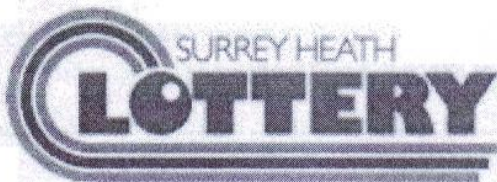
Sue Flynn marking a valuable Classic motorbike for Tony Thomas at the Mytchett Community Day



## *Play the Surrey Heath Lottery to help raise money for your Neighbourhood Watch*

We need your help so that we can continue to offer and even expand our Neighbourhood Watch service! In particular we need to raise funds to purchase a vehicle to showcase and raise awareness of Neighbourhood Watch at local shows and events.

Please help us by joining the Surrey Heath Lottery today and good luck in the draws!



[surreyheathlottery.co.uk/support/surrey-heath-neighbourhood-watch-support-group/buytickets](http://surreyheathlottery.co.uk/support/surrey-heath-neighbourhood-watch-support-group/buytickets)

### *About the Surrey Heath Lottery*

Surrey Heath Lottery is an exciting weekly lottery that raises money for good causes in Surrey Heath. The lottery and its prizes are a way of putting the fun in fundraising, but the real winners are the good causes.

From every £1 ticket sold 60p will go to good causes in Surrey Heath. To put this in perspective when you play

the National Lottery 25% goes to good causes – so this local lottery more than doubles the ticket percentage that goes to good causes.

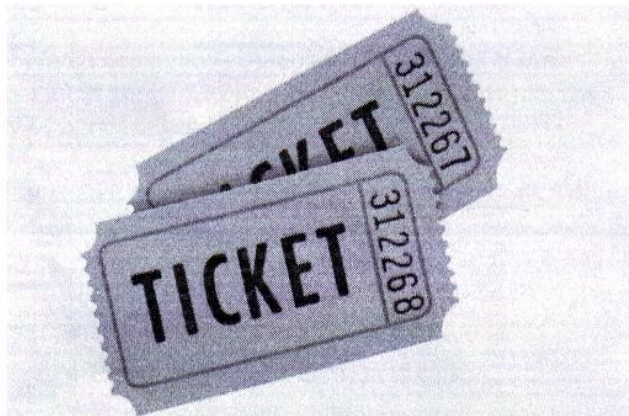
Even better, you can choose which good cause gets 50p of the 60p (the remaining 10p will be distributed to other good causes). So you can choose to support your Neighbourhood Watch when buying tickets.

Each ticket will consist of 6 numbers and each number will be between 0 and 9. There will be a draw every Saturday night when a 6 digit winning combination will be picked. Prizes will be given to players with tickets that match the first or last 2-6 numbers from the winning combination. Match all 6 and you win the JACKPOT!

Thank you for your support!

**Martin Butcher**

Chairman, Surrey Heath Neighbourhood Watch Support Group



### *Donation from Community Matters scheme at Waitrose in Bagshot - and a new box at Waitrose in Frimley!*

If you have shopped at Waitrose recently, you may have noticed that at the checkout you receive a token, which you then place in the box of the good cause you'd most like to support. The more tokens a cause gets, the bigger the donation they receive.

We are delighted to announce that we have been awarded £284 from the scheme at Waitrose in Bagshot. This is such good news and we wish to express huge thanks to everyone who kindly supported us!

This sum will pay for an edition of HeathWatch to be printed and distributed to hundreds of people in our community, keeping them in touch with crime and security advice, as well as ensuring community connections remain strong.

We now have a box at the Frimley branch of Waitrose! So please, keep on dropping those little green tokens into it, to help us continue with our work for the community - thank you!



As you know, Surrey Heath Neighbourhood Watch supports Surrey Police in the reduction and prevention of crime in the borough through greater public participation in the prevention of crime/anti-social behaviour and by increasing residents' awareness of crime and crime patterns.



# Watch Updates

Upcoming Watch Coordinators' and Members' meetings on Mondays at 19.30: 23rd September 2019 and 25th November 2019 at St Mary's Church, Park Road, Camberley, Surrey, GU15 2SR. **ALL ARE WELCOME!**

## Can you help?

Your Watch Coordinator does a grand job in running your Neighbourhood Watch but he/she needs your support and assistance in distributing HeathWatch and sometimes deputising at the Watch Coordinators' meeting. These are not onerous tasks and your Watch will benefit. Please do contact your Coordinator if you are able to offer your services. Many thanks. Your Neighbourhood Watch Support Group would be very grateful for any contribution towards its work, large or small. Should you wish to contribute, our bank account details are Lloyds Bank, account name Surrey Heath Neighbourhood Watch Support Group, Sort Code 30-91-53, A/C No. 00859924. Thank you for any support.

## Watch News

### New Watches

Cedar Grove and School Close, Windlesham

### Watch Coordinator

Helen Humphries

## Facebook

Emma Bagnell created **Surrey Heath Neighbourhood Watch Group** on Facebook on 22 June 2017. Since then, it's gone from strength to strength and brought a lot of good into our community. Please do join the group and benefit from all the hard work, particularly by our dedicated group admin, Emma.

Visit: [facebook.com/groups/568384326884016/](https://facebook.com/groups/568384326884016/) or just search online for Surrey Heath NW Facebook Group.

## Useful websites

- Surrey Heath Neighbourhood Watch: [surreyheathnw.co.uk](http://surreyheathnw.co.uk)
- Surrey Heath NW Facebook group: [facebook.com/groups/568384326884016/](https://facebook.com/groups/568384326884016/)
- In The Know: [intheknow.community](http://intheknow.community)
- Neighbourhood & Home Watch Network: [ourwatch.org.uk](http://ourwatch.org.uk)
- Surrey Heath Borough Council: [surreyheath.gov.uk](http://surreyheath.gov.uk)
- Safer Surrey Heath Partnership: [safersurreyheath.info](http://safersurreyheath.info)
- Lost Property: [virtualbumblebee.co.uk](http://virtualbumblebee.co.uk)
- Reporting minor crimes: [police.uk](http://police.uk)
- Property Register: [immobilise.com](http://immobilise.com)
- Most Wanted: [crimestoppers-uk.org](http://crimestoppers-uk.org)
- National Fraud Intelligence Bureau: [actionfraud.org.uk](http://actionfraud.org.uk)
- Surrey Police: [surrey.police.uk](http://surrey.police.uk)
- Twitter @surreypolice

## Neighbourhood Watch Area Coordinators

- Camberley, St Pauls, Old Dean, Town, St Michaels & Watchetts:  
Alan Hitchcock, 01276 406911,  
[ahitchcock@surreyheathnw.co.uk](mailto:ahitchcock@surreyheathnw.co.uk)
- Frimley, Parkside, Heatherside, Deepcut, Frimley Green & Mytchett:  
Martin Shorten, 01252 838639  
[mshorten@surreyheathnw.co.uk](mailto:mshorten@surreyheathnw.co.uk)
- Lightwater, Bagshot, Bisley, Chobham, West End & Windlesham:  
Mike Potter, 01276 474231,  
[MPotter@surreyheathnw.co.uk](mailto:MPotter@surreyheathnw.co.uk)
- Surrey Heath Police Neighbourhood Team Coordinators: 01483 639880
- Design Out Crime Officers (DOCO)
- Stephen Cake, 01483 633272, 07967 988734,  
[stephen.cake1@surrey.pnn.police.uk](mailto:stephen.cake1@surrey.pnn.police.uk)
- Mike Jones, 01483 636626, 07967987908,  
[mike.Jones2@surrey.pnn.police.uk](mailto:mike.Jones2@surrey.pnn.police.uk)